

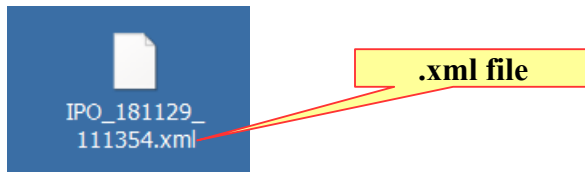
Avaya IP Office Standard Mode Install PLDS Licenses Telquest Tech Support

The new PLDS License install method is different than the traditional ADI License method.

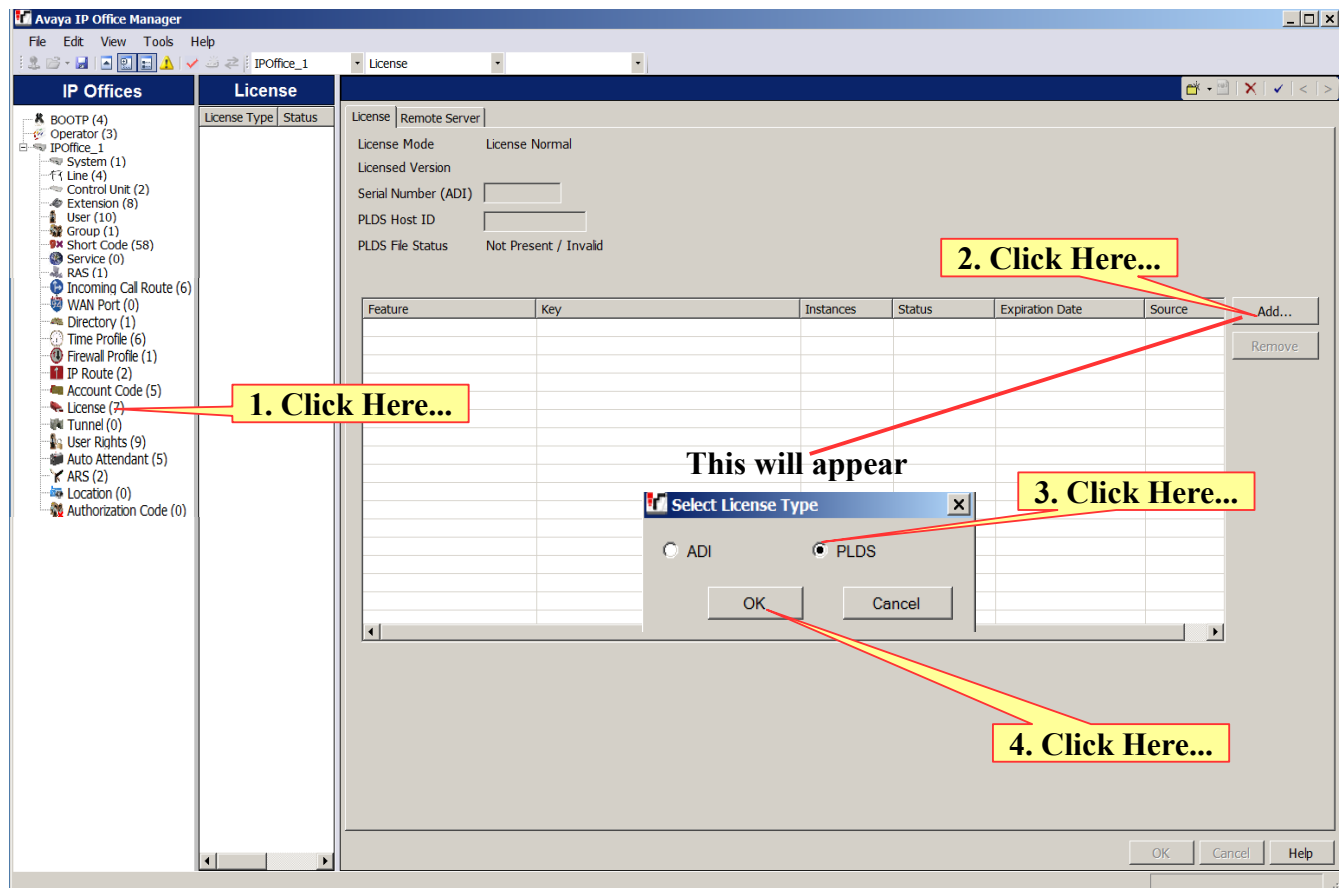
You will receive an attached .xml File via email.

Click and Drag that .xml File to your Desktop.

It will look similar to this on your Desktop:



Now, open the Manager program and connect to the IP Office.



1. Click Here...

2. Click Here...

**This is the .xml file that
you placed on your Desktop**

3. It will jump to here

4. Click Here...

[illegible]

